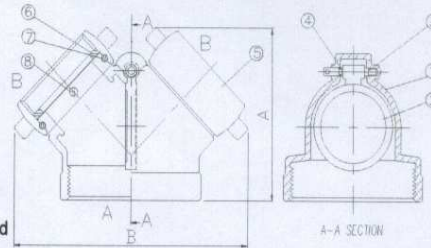




**BH-1**  
**STRAIGHT SINGLE CLAPPER**  
**TWO-WAY INLETS**

An exposed auxiliary inlet connection with 500 G.P.M. inlet capacity to supplement fire protection water supply. Exposed design provides an economical method of satisfying Fire Dept. inlet requirements.



**Specs**

**Size:** 4" IPS Outlet  
 (2) 2 1/2" NST Swivel Inlets

**Swivels:** 2 1/2" NST PL

- BCT
- ONT
- QST
- PHX
- TEM
- CLV

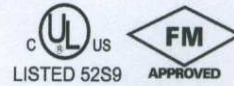
**Standard equipment:**

Cast brass two-way inlet body only with single swing clapper and pin or rocker lug hose thread swivel; angle NPT outlet connection.

**Branding:**  
 "AUTO SPKR"

**Optional Finishes:**  
 RP - Red Painted

	4X2 1/2
A	5-33/64"
B	8-5/64"

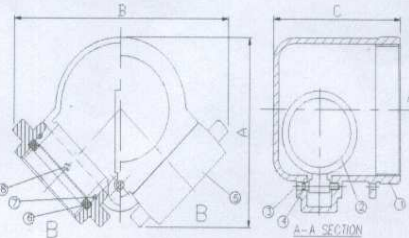


NO	NOMENCLATUR	MATERIALS	NO	NOMENCLATUR	MATERIALS
1	BODY	ASTM B584 C85700	5	HOSE COUPLING	ASTM B584 C85700
2	CLAPPER	ASTM B584 C85700	6	RUBBER FACING	VULCANIZED RUBBER
3	HINGE PIN	ASTM B16 C36000	7	BALL BEARINGS	AISI 304
4	O-RING	VULCANIZED RUBBER	8	SCREW	ASTM B16 C36000



**BH-2**  
**90° SINGLE CLAPPER**  
**TWO-WAY INLETS**

An exposed auxiliary inlet connection with 500 G.P.M. inlet capacity to supplement fire protection water supply. Exposed design provides an economical method of satisfying Fire Dept. inlet requirements.



**Specs**

**Size:** 4" IPS Outlet  
 (2) 2 1/2" NST Swivel Inlets

**Swivels:** 2 1/2" NST PL

- BCT
- ONT
- QST
- PHX
- TEM
- CLV

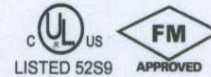
**Standard equipment:**

Cast brass two-way inlet body only with single swing clapper and pin or rocker lug hose thread swivel; angle NPT outlet connection.

**Branding:**  
 "AUTO SPKR"

**Optional Finishes:**  
 RP - Red Painted

	4X2 1/2
A	6-5/16"
B	7-11/16"
C	4 3/4



NO	NOMENCLATUR	MATERIALS	NO	NOMENCLATUR	MATERIALS
1	BODY	ASTM B584 C85700	5	HOSE COUPLING	ASTM B584 C85700
2	CLAPPER	ASTM B584 C85700	6	RUBBER FACING	VULCANIZED RUBBER
3	HINGE PIN	ASTM B16 C36000	7	BALL BEARINGS	AISI 304
4	O-RING	VULCANIZED RUBBER	8	SCREW	ASTM B16 C36000